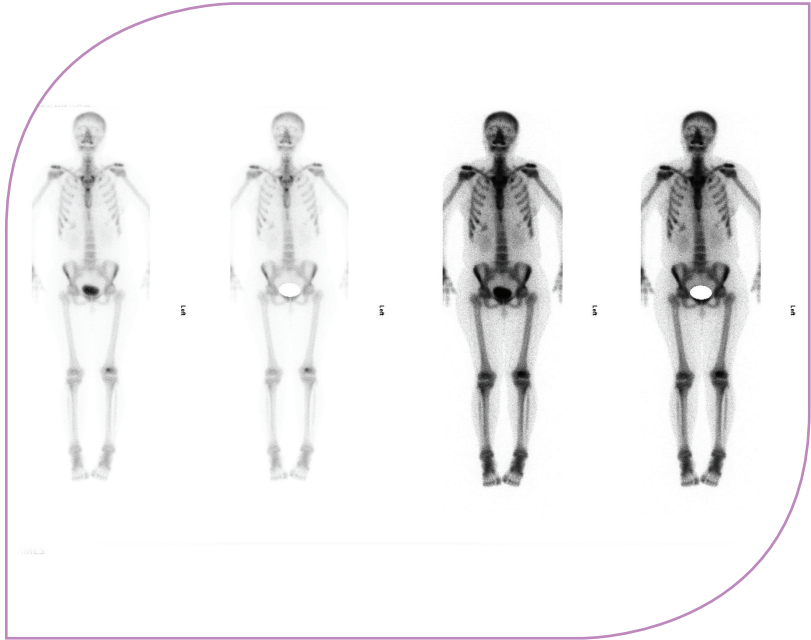




مركز الكويت لمكافحة السرطان
Kuwait Cancer Control Center

Patient Education

Nuclear Medicine Department Bone Scan



Developed in partnership with





Your doctor has ordered a bone scan to detect possible bone problems. This study is usually performed to detect bone infection, occult fractures, and benign and malignant bone tumors.

Preparation

- No special preparation is required. You may eat, drink as usual and take your medications.
- It is recommended that you be well hydrated for the test, i.e. drink fluids (preferably water and fluids) before & after the procedure.
- After the injection, you should drink 2-3 liters of fluids.
- Most of the radioactive material not going to the bones leaves your body through the urine. You should empty your bladder (in toilets specifically designated for this procedure) as often as you can before the images are taken.
- No special clothes are needed and there will be no change of clothes for the scan.

Procedure

- For the test, please make sure to put your valuable things aside in a safe place including your cell phone. Also, please make sure to remove all metals and objects (i.e. gold) that may interfere with the imaging and interpretation of the scan.
- On the same day of the test, please proceed to the Nuclear Medicine Department reception to complete the admission paperwork.
- A small amount of radioactive material called a tracer will be injected into your vein by a nuclear medicine physician. You will be asked to return 3-4 hours later.
- In the camera room you will be positioned lying still on your back and a nuclear medicine technologist will take images of your body, which typically takes from 30-60 minutes.

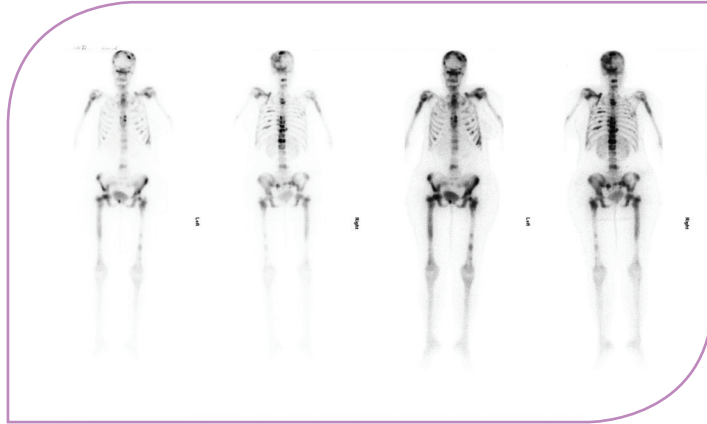


- Other times, delayed images may be taken hours later or 24 hours after the injection.
- In some cases, images also are taken during the initial injection of the tracer to assess the blood supply to the bone.
- When the scan is finished, all the information will be analyzed using a special computer that helps the nuclear medicine physician in writing your results.

Important Information for the Patient

- You should not move while you are under the camera.
- The amount of radiation used is small and safe.
- You can be around other people & use a bathroom without risk to others.
- In case of pregnancy or the possibility of pregnancy, please notify your doctor and nuclear medicine physician so that this can be discussed.

If you have any questions, please speak to your health care provider or a nuclear medicine specialist at the following number: 2484-9100 ext. 3026 or 3014.



This information is to be used for informational purposes only and is not intended as a substitute for professional medical advice, diagnosis or treatment. Please consult your health care provider for advice about a specific medical condition. A single copy of these materials may be reprinted for non-commercial personal use only.

- عند الانتهاء من الفحص، يقوم جهاز الكمبيوتر الخاص بتحليل المعلومات الخاصة بفحصك ليتسنى لطبيب الطب النووي كتابة التقرير المناسب لك.

معلومات أخرى مهمة يجب عليك أن تعلمها

- يجب عدم الحركة بتاتاً خلال التصوير.
- لا تقلق من المادة المشعة التي تم حقنها لأنها كمية صغيرة وسوف يتخلص منها الجسم خلال فترة قصيرة.
- هذا الفحص آمن ولا يحمل أي خطر على المريض أو أسرته أو مرافقيه. كما يمكنك استعمال الحمام (دورة المياه) بصورة اعتيادية بدون أي ضرر على الآخرين.
- في حال الحمل أو احتمال الحمل، الرجاء إبلاغ طبيبك، حتى يتمكن من مناقشة الأمر مع طبيب الطب النووي.

وفي حال وجود أي أسئلة أو استفسارات لا تتردد في مناقشتها مع المتخصص في الطب النووي على الأرقام التالية: البدالة 24849100 داخلي 3014 أو 3026.



إن المعلومات الواردة بهذه النشرة تهدف إلى التوعية وليست بأي حال من الأحوال بديلاً عن الرعاية الطبية المتخصصة لأغراض التشخيص أو العلاج، ويجب الرجوع للأطباء المعالجين للاستفسار عن أي أمور إضافية متخصصة ولطلب الاستشارة الطبية المتعلقة بأي مشكلة محددة.

